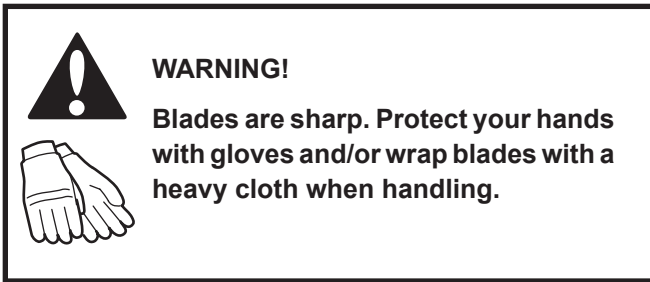


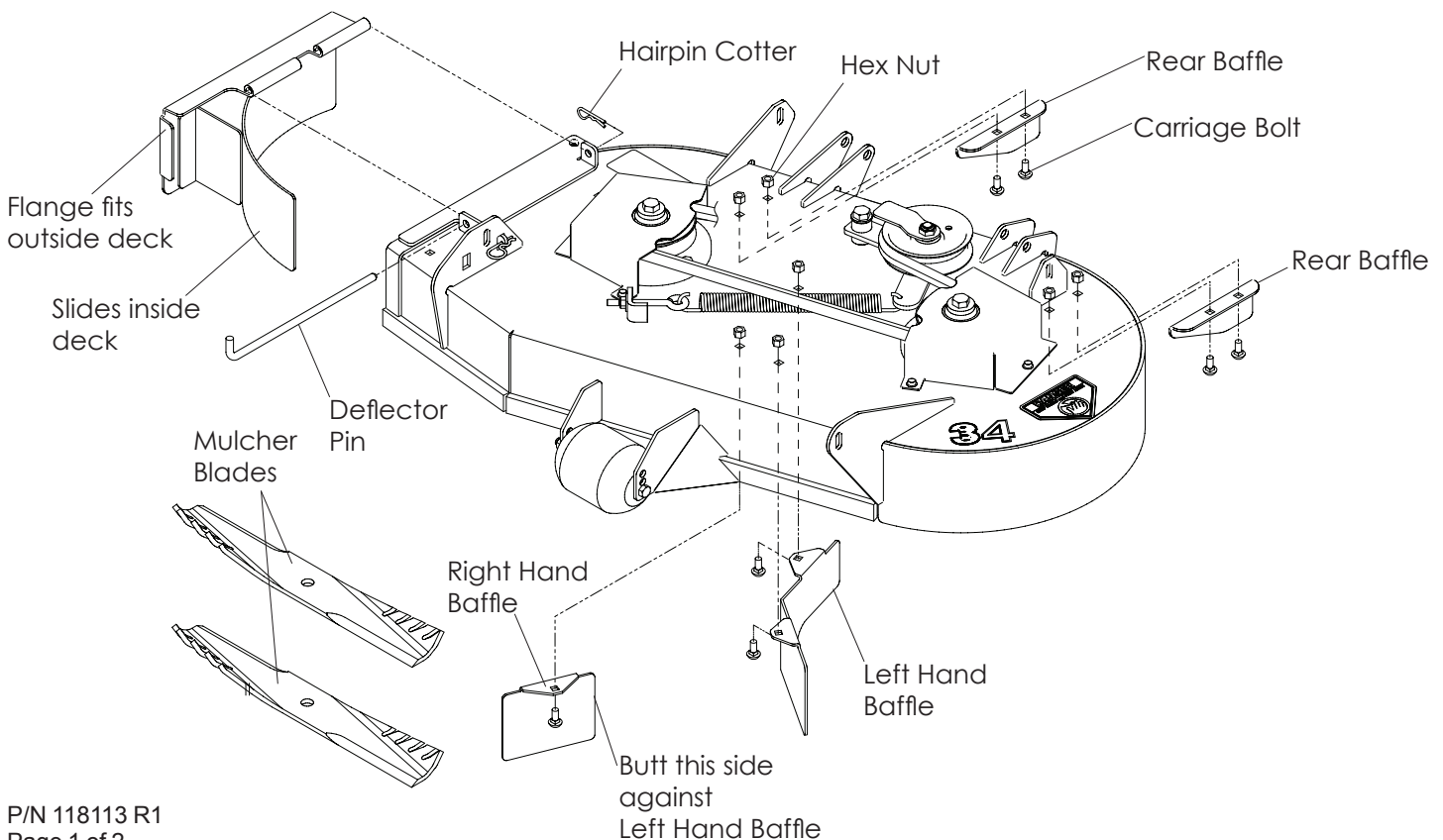
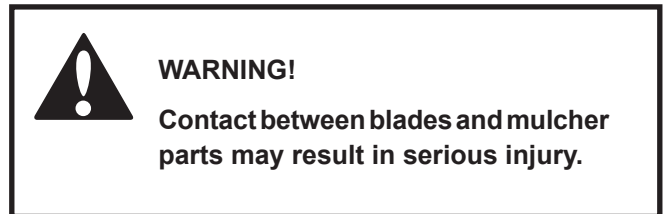
# INSTALLATION INSTRUCTIONS

## 34" MULCHER - 539 123028

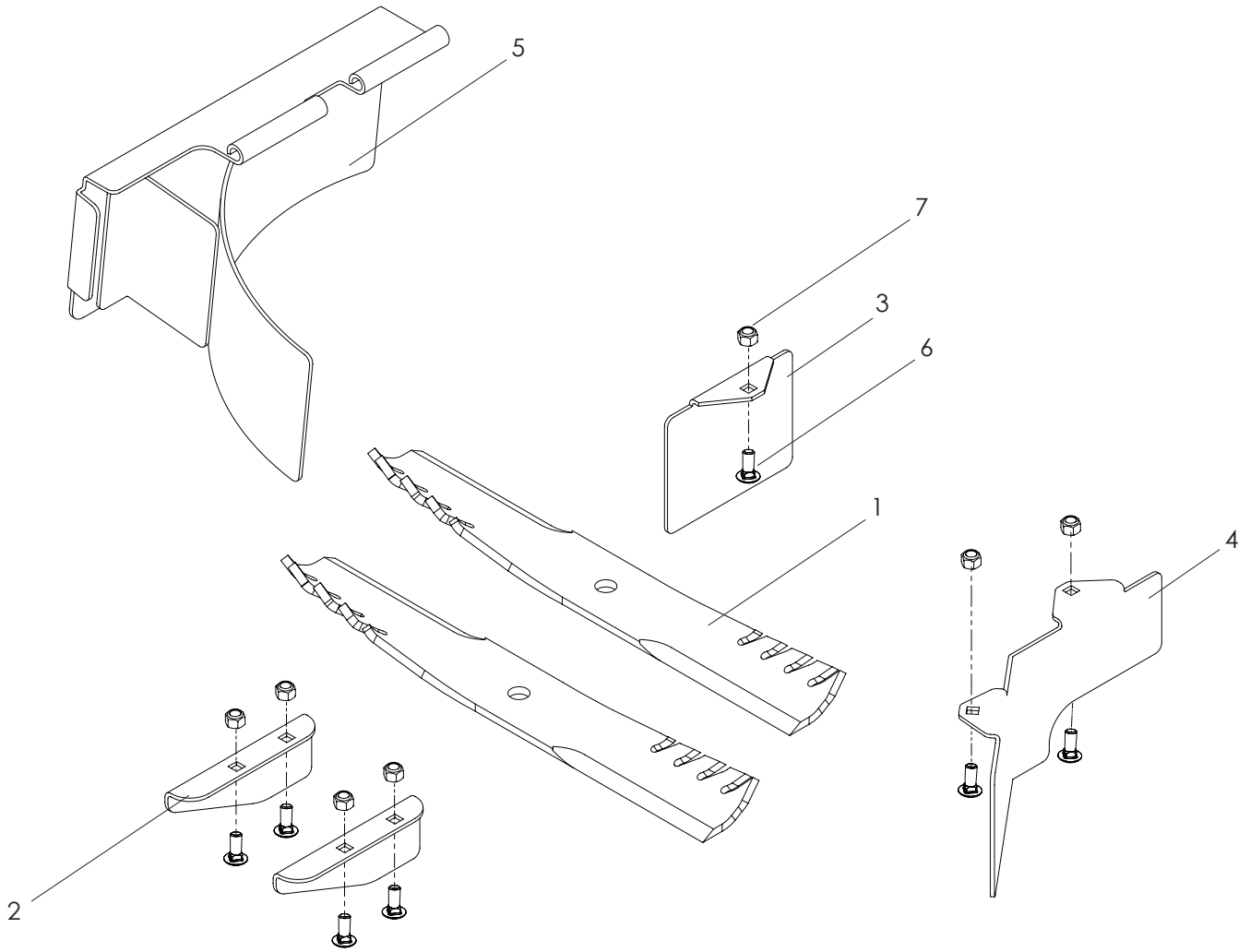


1. Replace standard mower blades with two mulcher blades included in the kit. Retain standard blades for reuse if mulcher is to be removed from the deck. It is recommended that standard mower blades be used for mowing without the mulcher.
2. Install the left hand baffle into holes on mower deck as illustrated, using two  $\frac{5}{16}$ -18 x  $\frac{3}{4}$ " carriage bolts and two  $\frac{5}{16}$  nyloc nuts.
3. Install right hand baffle as shown. The rear edge of the right hand baffle should butt up against the left hand baffle to form a "Y". Use one  $\frac{5}{16}$ -18 x  $\frac{3}{4}$ " carriage bolt and one  $\frac{5}{16}$  nyloc nut.

4. Install the rear baffles into deck holes shown. Use two  $\frac{5}{16}$ -18 x  $\frac{3}{4}$ " carriage bolts and two  $\frac{5}{16}$  nyloc nuts per baffle.
5. Remove hairpin cotter and deflector pin from the deflector. Remove deflector and set aside to be reinstalled if mulcher is removed. Retain hairpin cotter and deflector pin for reuse.
6. Install mulcher cover into discharge opening, as illustrated and secure with deflector pin and hairpin cotter removed in Step 5.
7. Rotate mower blades several times to check for sufficient clearance with all baffles.



# PARTS LIST



ITEM	PART NO.	QTY.	DESCRIPTION
1.	539 117767	2	BLADE, MULCHER
2.	539 118016	2	BAFFLE, REAR
3.	539 118017	1	BAFFLE, RT
4.	539 118018	1	BAFFLE, LT

ITEM	PART NO.	QTY.	DESCRIPTION
5.	539 118019	1	MULCH COVER
6.	539 990316	7	RHSNB $\frac{5}{16}$ -18 x $\frac{3}{4}$ "
7.	539 990717	7	NUT $\frac{5}{16}$ -18 HEX NYLOC